

A development by



www.arilianhomes.co.uk

SENATE HOUSE

POTTERS BAR

Sole Agents



01707 655 566
pottersbar@bairstowevescountrywide.co.uk

Floor Plans

01

02

03

04

05

06

07

08

09

10

11

12

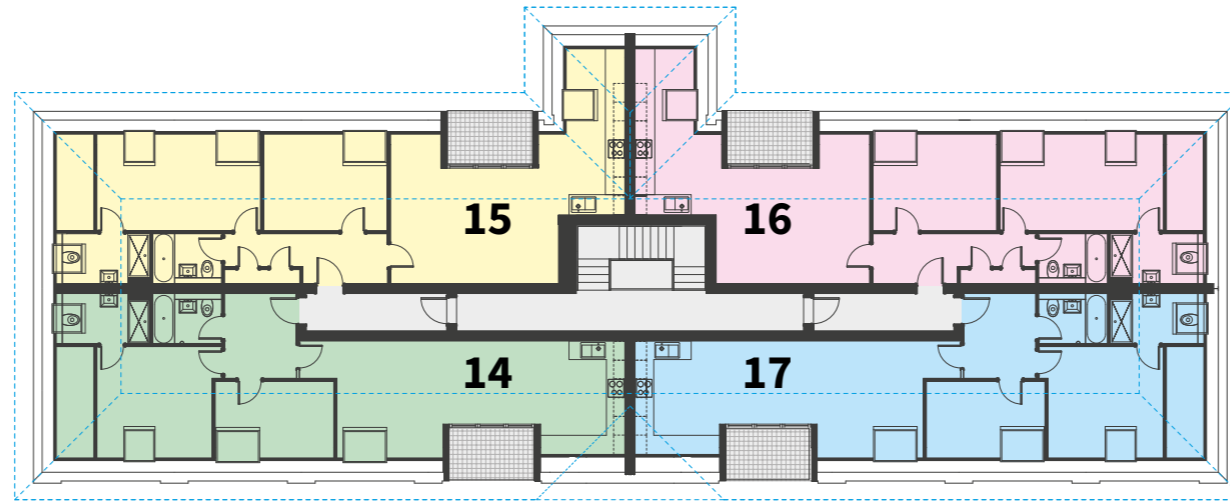
14

15

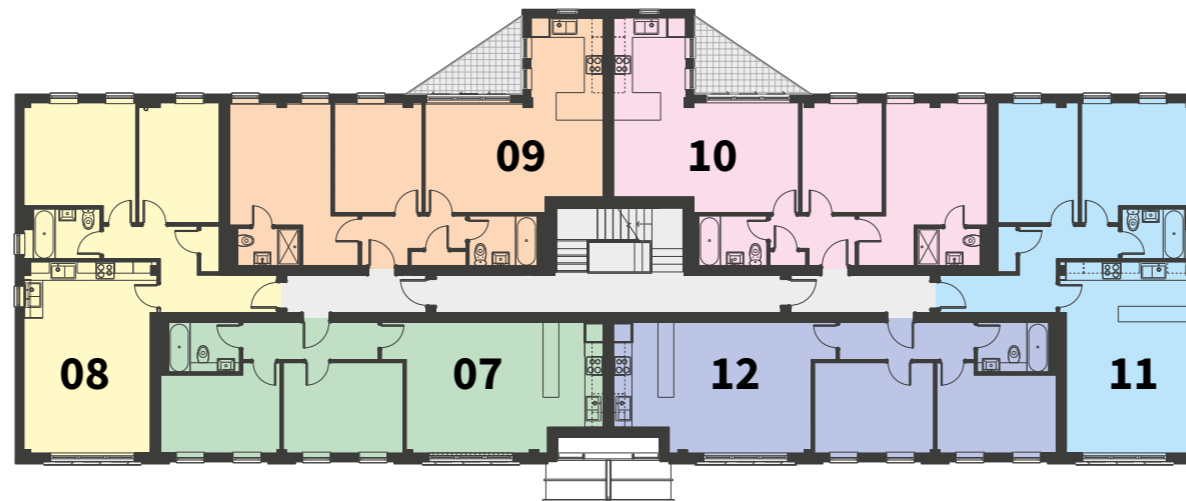
16

17

SECOND FLOOR APARTMENTS



FIRST FLOOR APARTMENTS



GROUND FLOOR APARTMENTS



A development by



www.arilianhomes.co.uk



Sole Agents



01707 655 566
pottersbar@bairstowevescountrywide.co.uk

Floor Plans

01

02

03

04

05

06

07

08

09

10

11

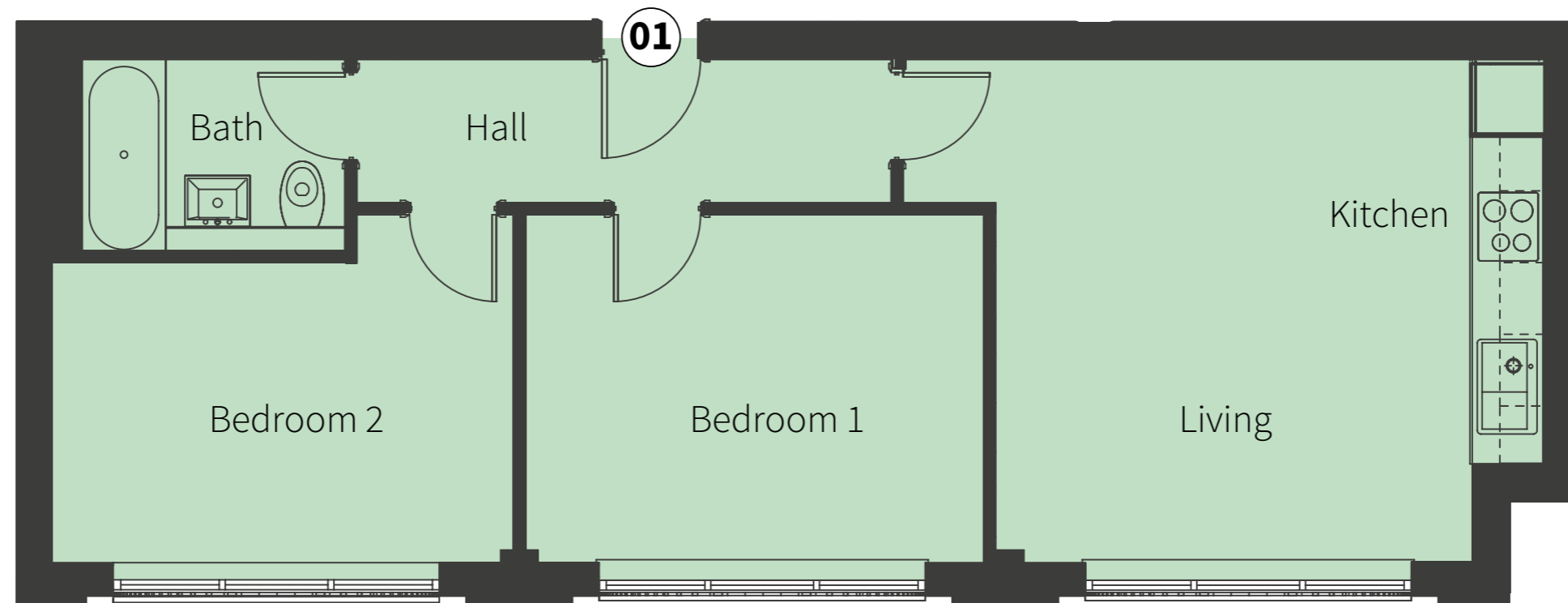
12

14

15

16

17



Apartment GF-01

Living / Kitchen	4.60 x 4.10m	15'2" x 13'6"
Bedroom 1	3.85 x 3.00m	12'8" x 9'10"
Bedroom 2	3.85 x 3.00m	12'8" x 9'10"

Plans not to scale and are for indicative purposes only.

01

A development by



www.arilianhomes.co.uk



Sole Agents



01707 655 566
pottersbar@bairstowevescountrywide.co.uk

Floor Plans

01

02

03

04

05

06

07

08

09

10

11

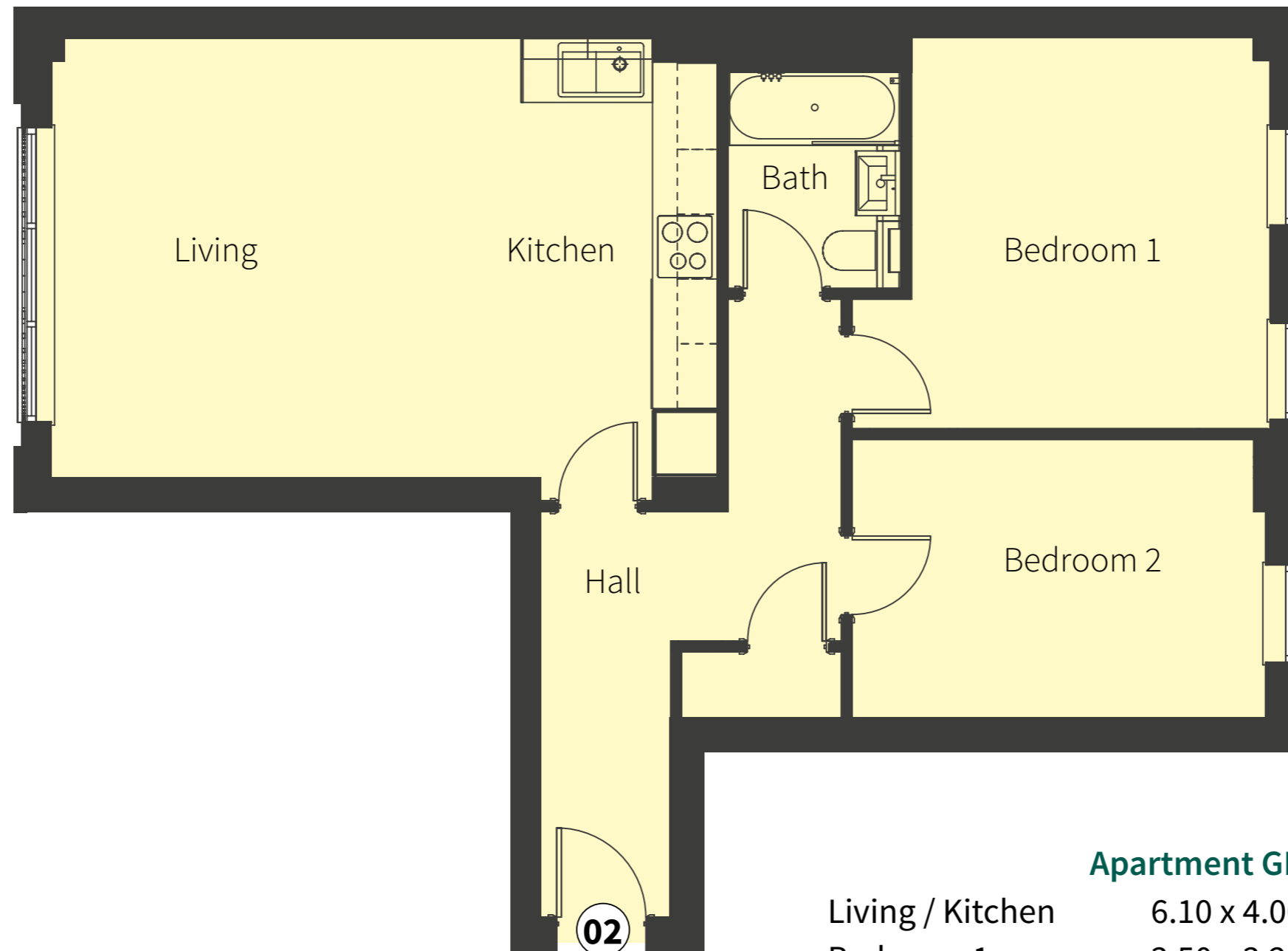
12

14

15

16

17



Apartment GF-02

Living / Kitchen	6.10 x 4.00m	20'0" x 13'2"
Bedroom 1	3.50 x 3.25m	11'6" x 10'8"
Bedroom 2	3.70 x 2.60m	12'2" x 8'6"

Plans not to scale and are for indicative purposes only.

02

A development by



www.arilianhomes.co.uk



Sole Agents



01707 655 566
pottersbar@bairstowevescountrywide.co.uk

Floor Plans

01

02

03

04

05

06

07

08

09

10

11

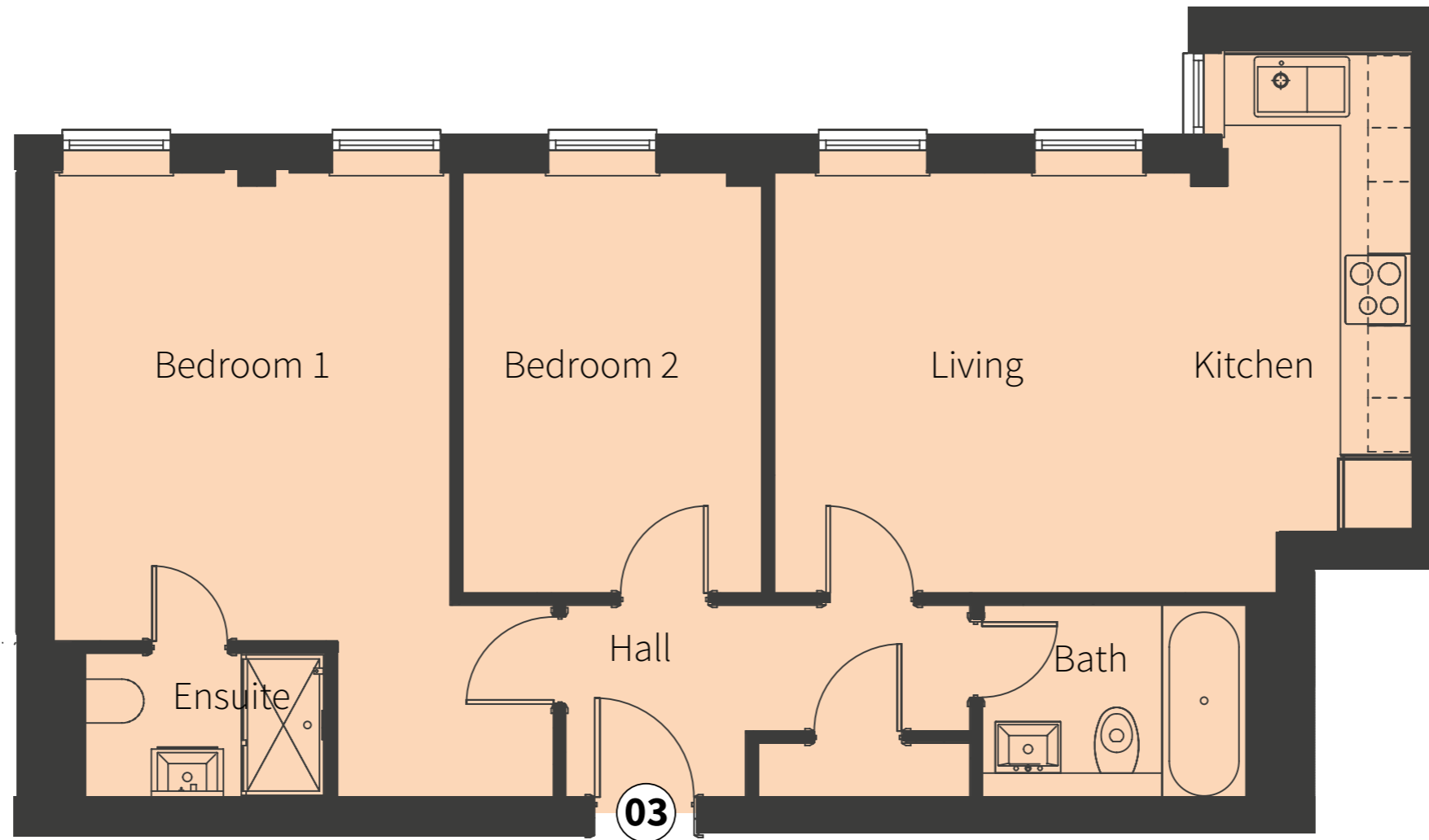
12

14

15

16

17



Apartment GF-03

Living / Kitchen	5.30 x 3.50m	17'5" x 11'6"
Bedroom 1	5.20 x 3.50m	17'1" x 11'6"
Bedroom 2	5.20 x 3.48m	17'1" x 11'5"

Plans not to scale and are for indicative purposes only.

03

A development by



www.arilianhomes.co.uk



Sole Agents



01707 655 566
pottersbar@bairstowevescountrywide.co.uk

Floor Plans

01

02

03

04

05

06

07

08

09

10

11

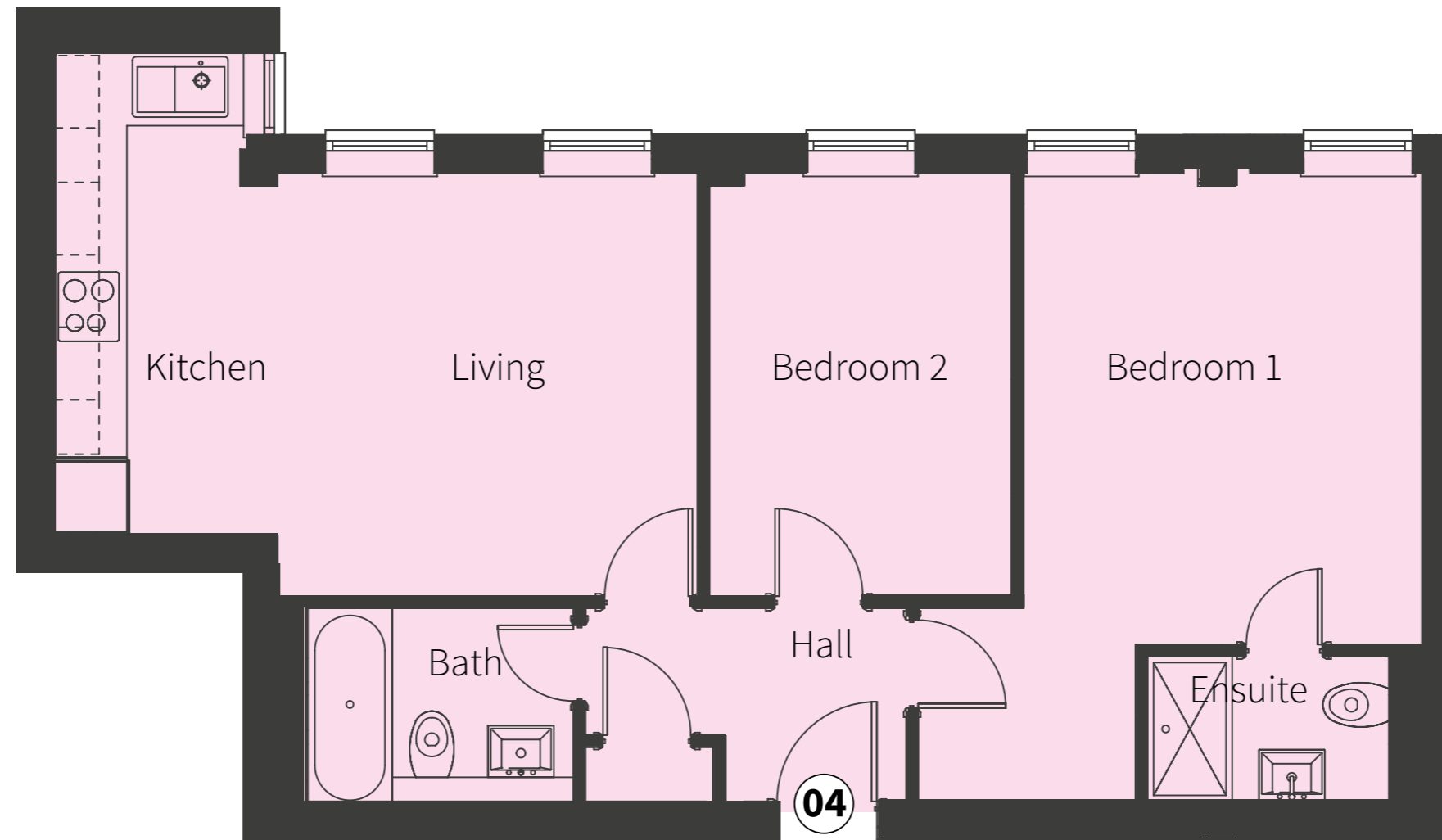
12

14

15

16

17



Apartment GF-04

Living / Kitchen	5.30 x 3.50m	17'5" x 11'6"
Bedroom 1	5.20 x 3.50m	17'1" x 11'6"
Bedroom 2	5.20 x 3.48m	17'1" x 11'5"

Plans not to scale and are for indicative purposes only.

04

A development by



www.arilianhomes.co.uk



Sole Agents



01707 655 566
pottersbar@bairstowevescountrywide.co.uk

Floor Plans

01

02

03

04

05

06

07

08

09

10

11

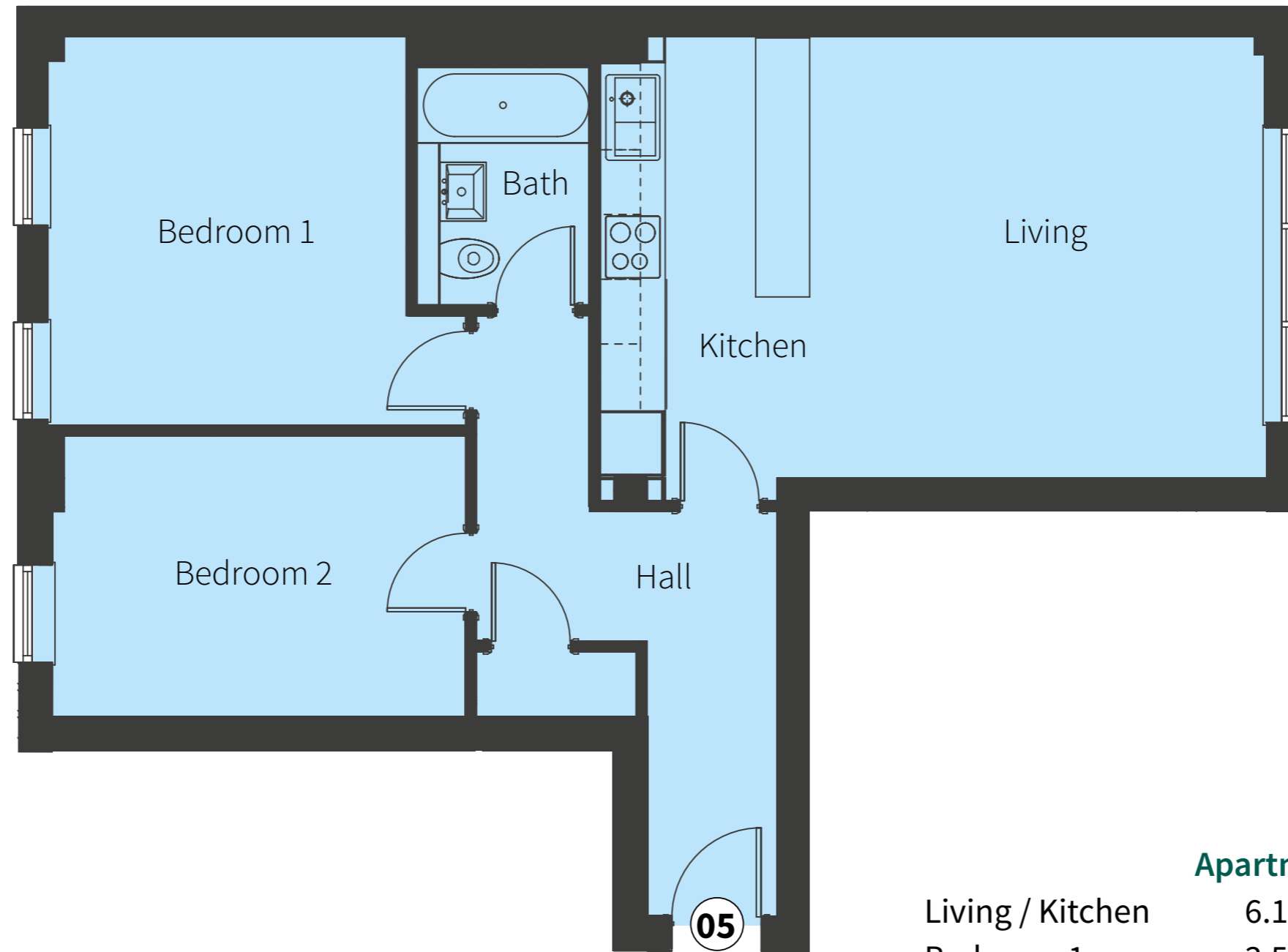
12

14

15

16

17



05

Apartment GF-05

Living / Kitchen	6.10 x 4.00m	20'0" x 13'2"
Bedroom 1	3.50 x 3.25m	11'6" x 10'8"
Bedroom 2	3.70 x 2.60m	12'2" x 8'6"

05

Plans not to scale and are for indicative purposes only.

A development by



www.arilianhomes.co.uk



Sole Agents



01707 655 566
pottersbar@bairstowevescountrywide.co.uk

Floor Plans

01

02

03

04

05

06

07

08

09

10

11

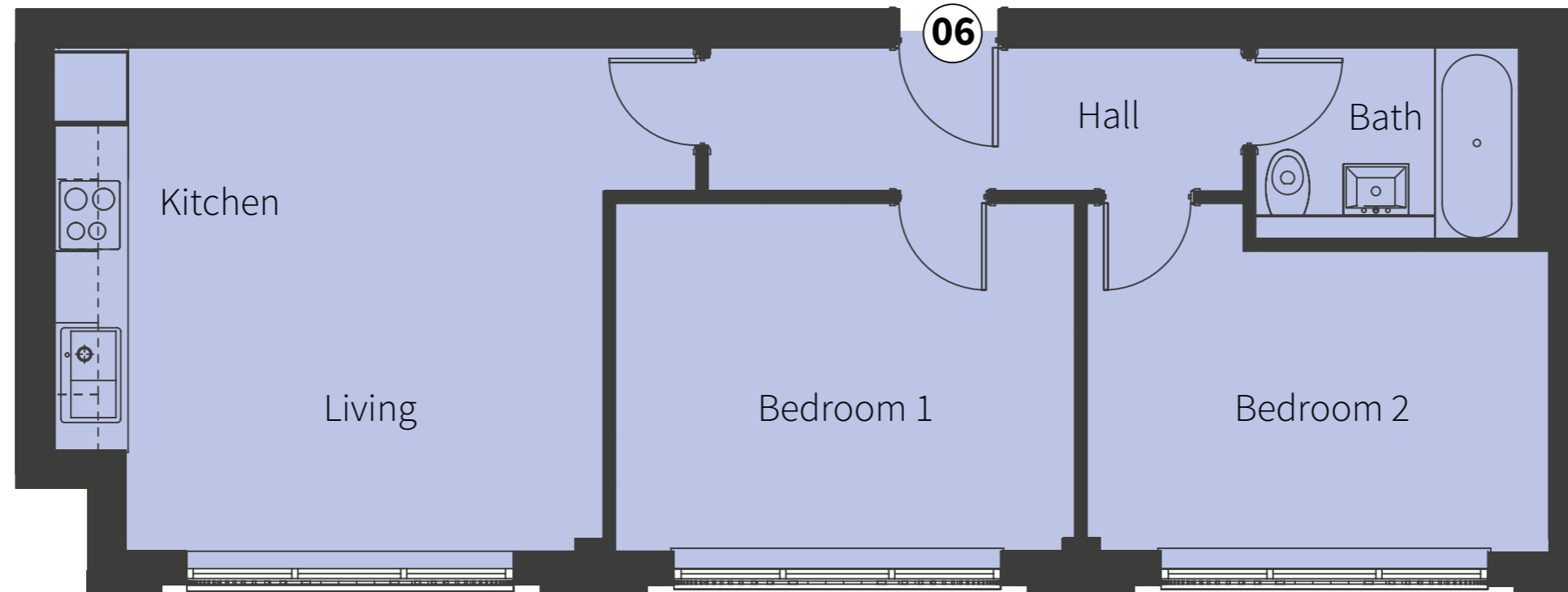
12

14

15

16

17



06

Apartment GF-06

Living / Kitchen	4.60 x 4.10m	15'2" x 13'6"
Bedroom 1	3.85 x 3.00m	12'8" x 9'10"
Bedroom 2	3.85 x 3.00m	12'8" x 9'10"

Plans not to scale and are for indicative purposes only.

A development by



www.arilianhomes.co.uk



Sole Agents



01707 655 566
pottersbar@bairstowevescountrywide.co.uk

Floor Plans

01

02

03

04

05

06

07

08

09

10

11

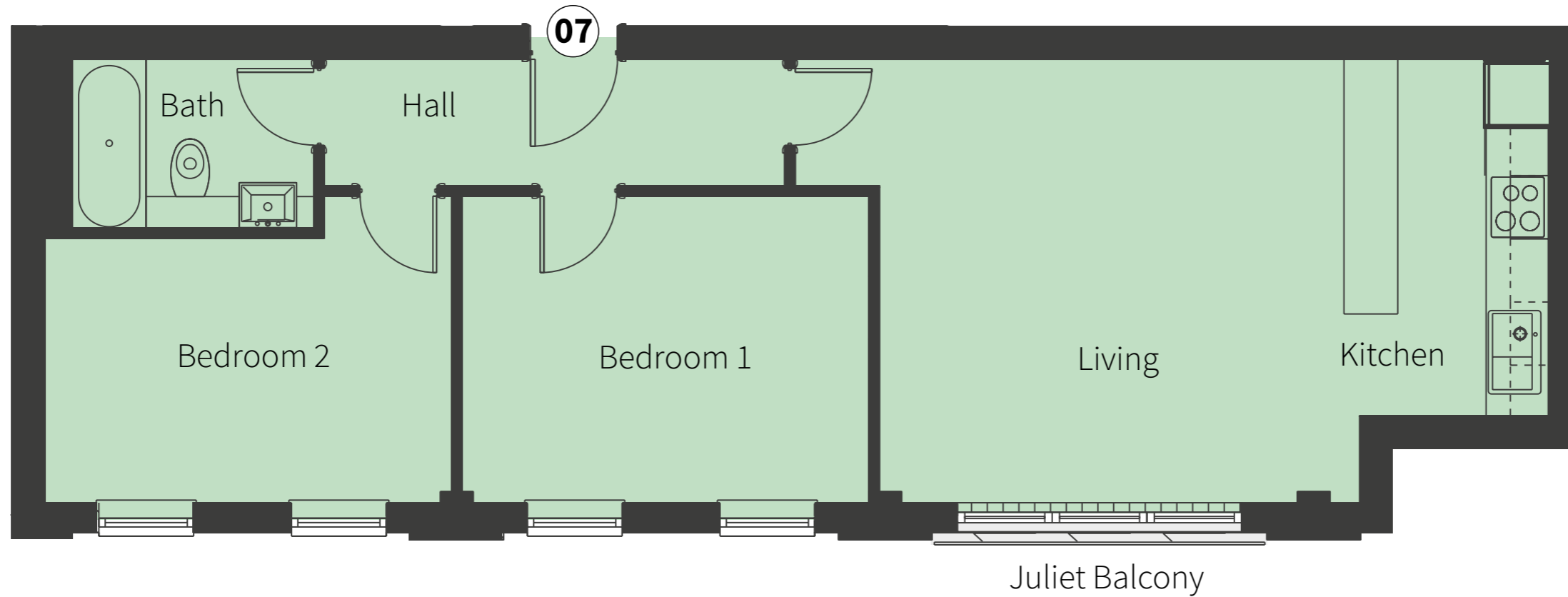
12

14

15

16

17



07

Apartment FF-07

Living / Kitchen	6.53 x 4.10m	21'5" x 13'6"
Bedroom 1	3.85 x 3.00m	12'8" x 9'10"
Bedroom 2	3.85 x 3.00m	12'8" x 9'10"

Plans not to scale and are for indicative purposes only.

A development by



www.arilianhomes.co.uk



Sole Agents



01707 655 566
pottersbar@bairstowevescountrywide.co.uk

Floor Plans

01

02

03

04

05

06

07

08

09

10

11

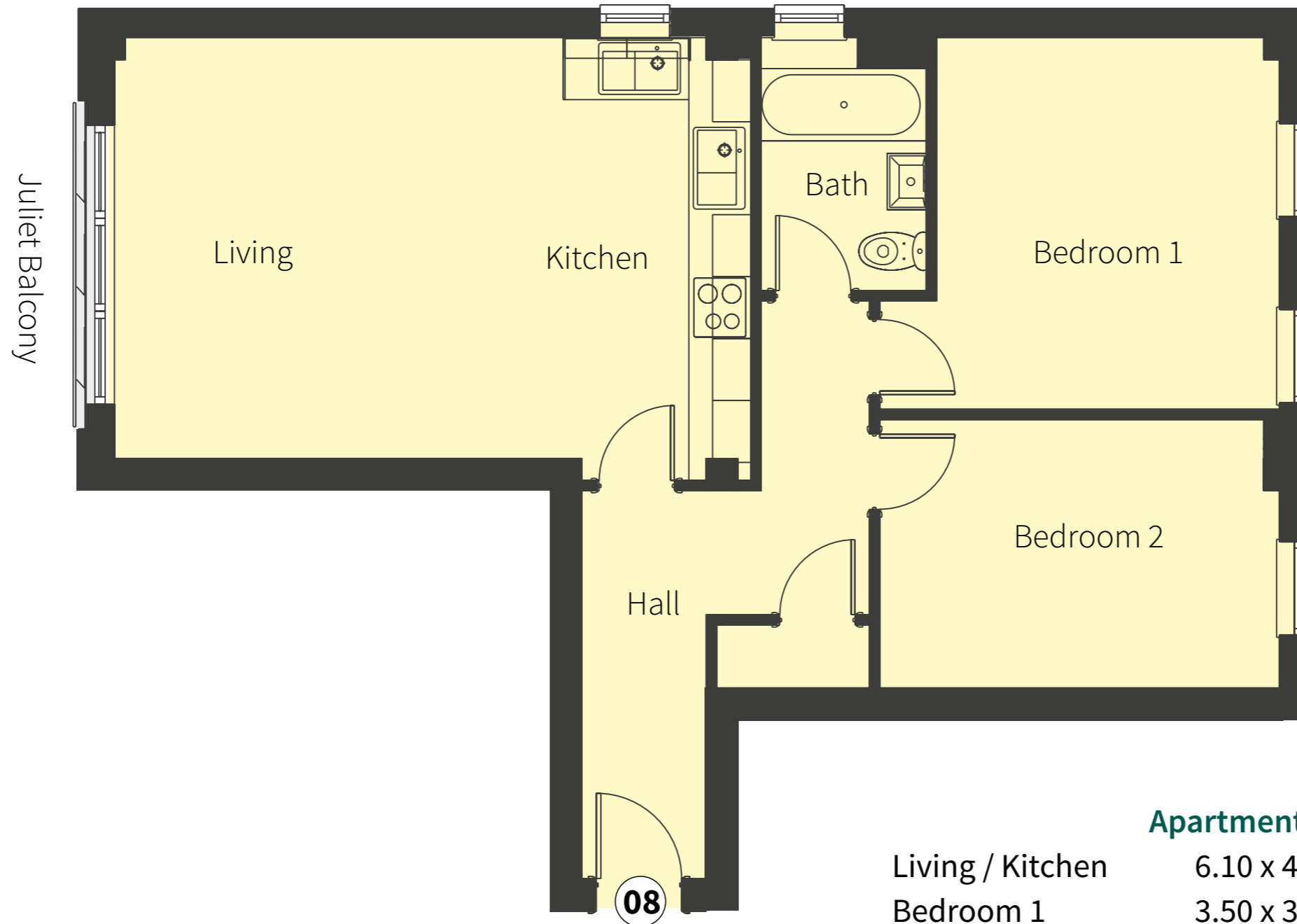
12

14

15

16

17



Apartment FF-08

Living / Kitchen	6.10 x 4.00m	20'0" x 13'2"
Bedroom 1	3.50 x 3.25m	11'6" x 10'8"
Bedroom 2	3.70 x 2.60m	12'2" x 8'6"

Plans not to scale and are for indicative purposes only.

08

A development by



www.arilianhomes.co.uk



Sole Agents



01707 655 566
pottersbar@bairstowevescountrywide.co.uk

Floor Plans

01

02

03

04

05

06

07

08

09

10

11

12

14

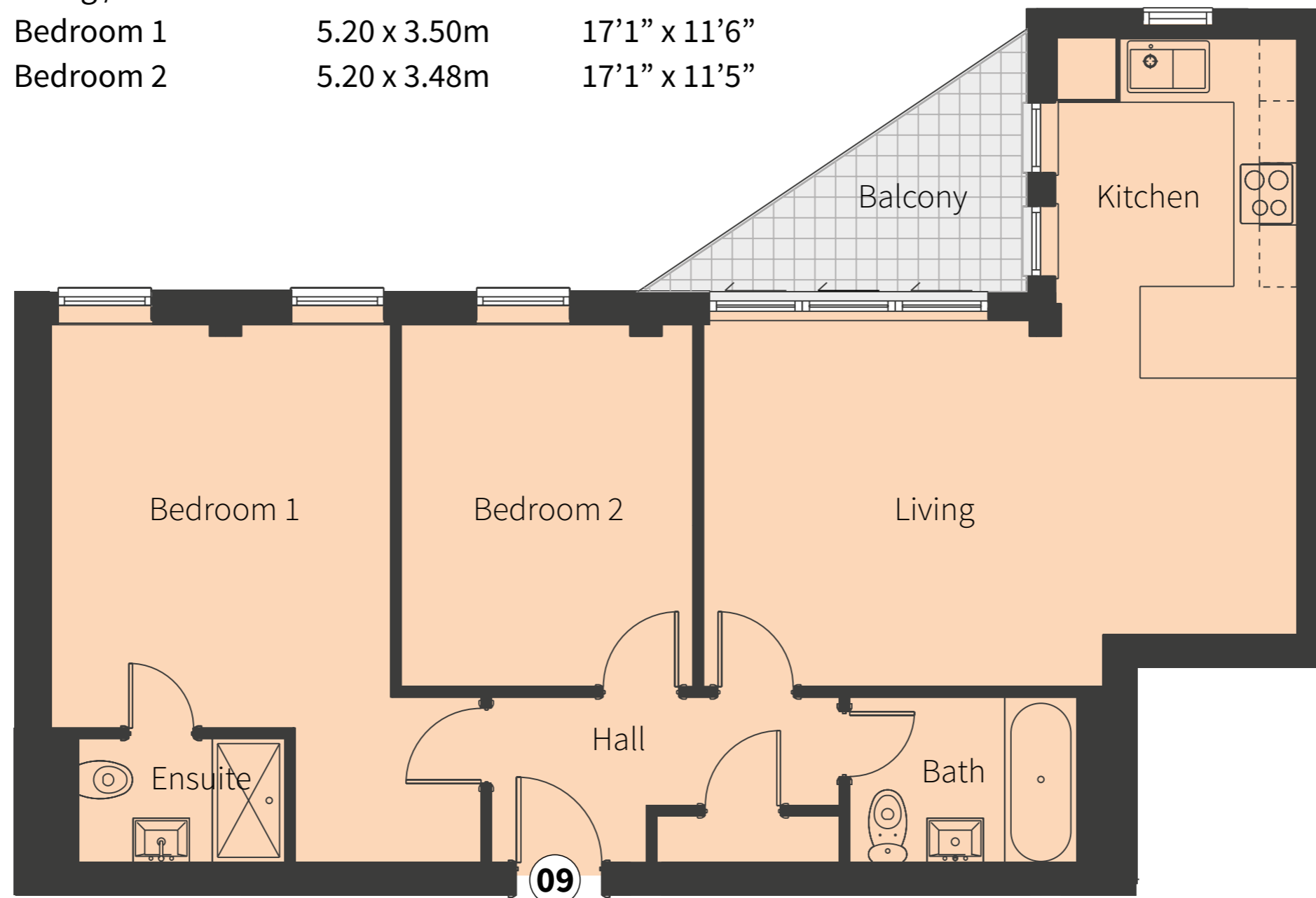
15

16

17

Apartment FF-09

Living / Kitchen	5.30 x 3.50m	17'5" x 11'6"
Bedroom 1	5.20 x 3.50m	17'1" x 11'6"
Bedroom 2	5.20 x 3.48m	17'1" x 11'5"



09

Plans not to scale and are for indicative purposes only.

A development by



www.arilianhomes.co.uk



Sole Agents

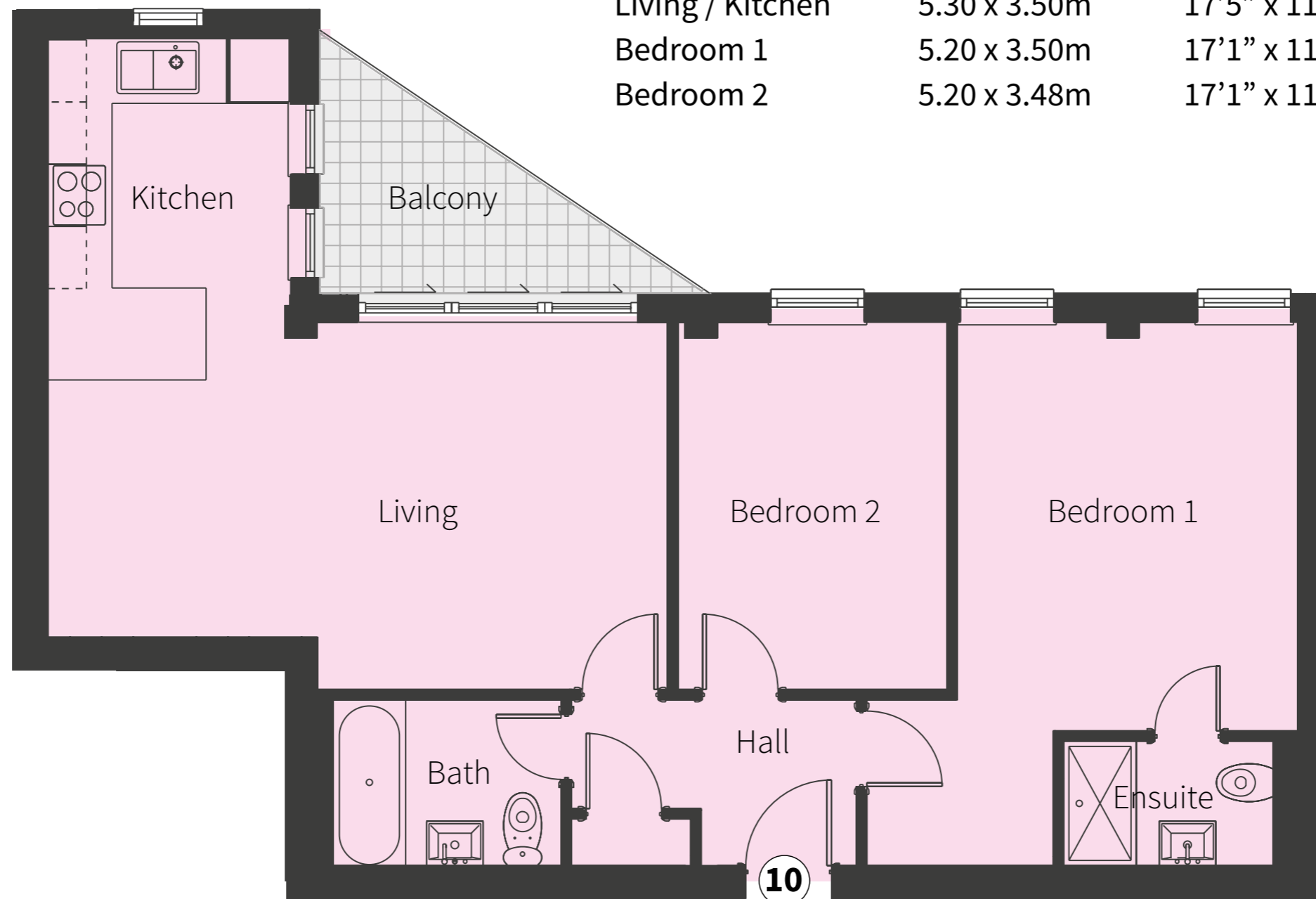


01707 655 566
pottersbar@bairstowevescountrywide.co.uk

- Floor Plans
- 01
- 02
- 03
- 04
- 05
- 06
- 07
- 08
- 09
- 10
- 11
- 12
- 14
- 15
- 16
- 17

Apartment FF-10

Living / Kitchen	5.30 x 3.50m	17'5" x 11'6"
Bedroom 1	5.20 x 3.50m	17'1" x 11'6"
Bedroom 2	5.20 x 3.48m	17'1" x 11'5"



10

Plans not to scale and are for indicative purposes only.

A development by



www.arilianhomes.co.uk



Sole Agents



01707 655 566
pottersbar@bairstowevescountrywide.co.uk

Floor Plans

01

02

03

04

05

06

07

08

09

10

11

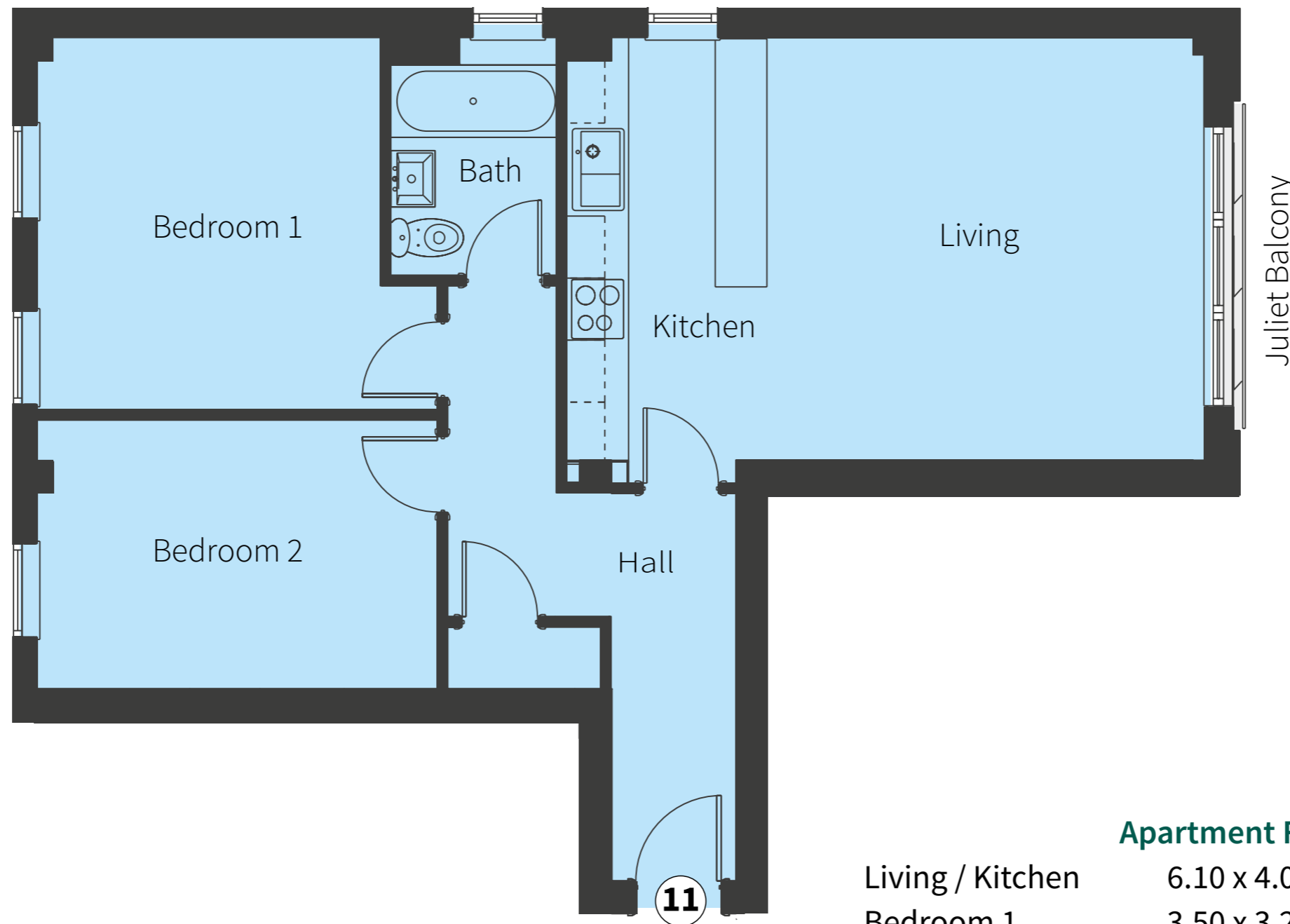
12

14

15

16

17



Apartment FF-11

Living / Kitchen	6.10 x 4.00m	20'0" x 13'2"
Bedroom 1	3.50 x 3.25m	11'6" x 10'8"
Bedroom 2	3.70 x 2.60m	12'2" x 8'6"

11

Plans not to scale and are for indicative purposes only.

A development by



www.arilianhomes.co.uk



Sole Agents



01707 655 566
pottersbar@bairstowevescountrywide.co.uk

Floor Plans

01

02

03

04

05

06

07

08

09

10

11

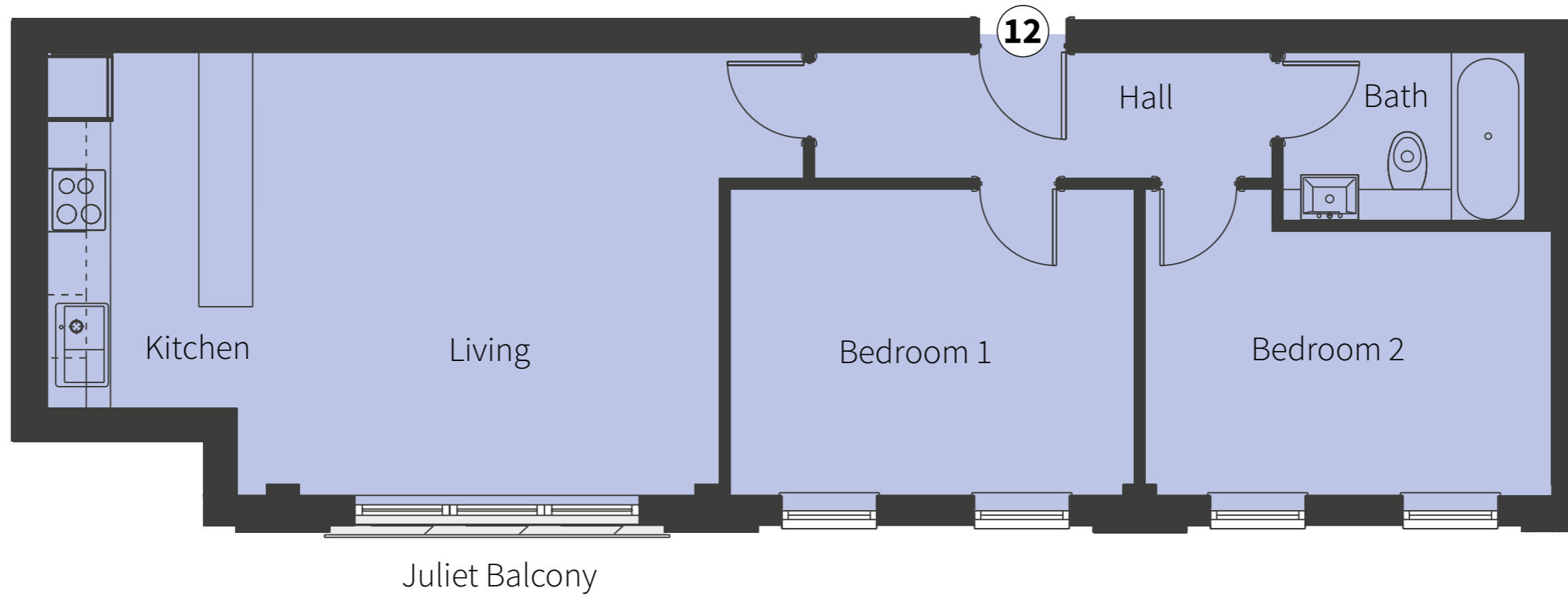
12

14

15

16

17



12

Apartment FF-12

Living / Kitchen	6.53 x 4.10m	15'2" x 13'6"
Bedroom 1	3.85 x 3.00m	12'8" x 9'10"
Bedroom 2	3.85 x 3.00m	12'8" x 9'10"

Plans not to scale and are for indicative purposes only.

A development by



www.arilianhomes.co.uk



Sole Agents



01707 655 566
pottersbar@bairstowevescountrywide.co.uk

Floor Plans

01

02

03

04

05

06

07

08

09

10

11

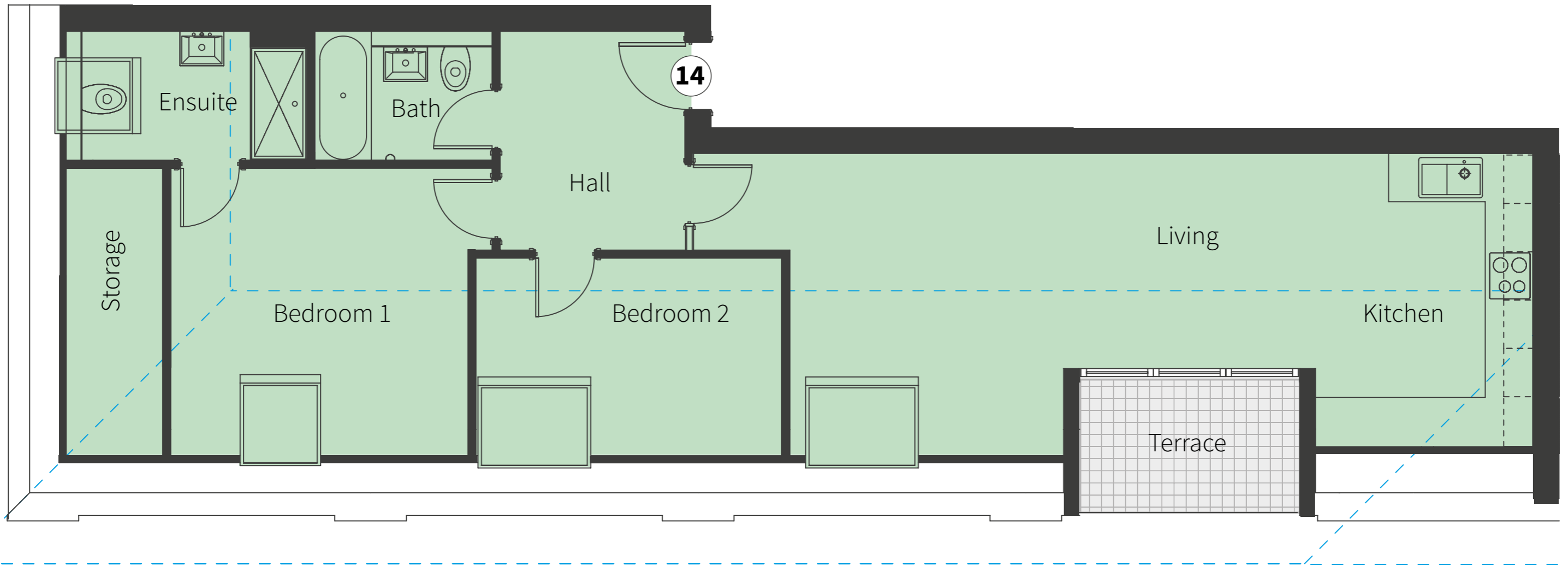
12

14

15

16

17



Apartment SF-14

Living / Kitchen	9.23 x 3.70m	30'3" x 12'2"
Bedroom 1	3.85 x 3.56m	12'7" x 11'8"
Bedroom 2	3.80 x 2.45m	12'6" x 8'2"

14

Plans not to scale and are for indicative purposes only.

A development by



www.arilianhomes.co.uk



Sole Agents



01707 655 566
pottersbar@bairstowevescountrywide.co.uk

Floor Plans

01

02

03

04

05

06

07

08

09

10

11

12

14

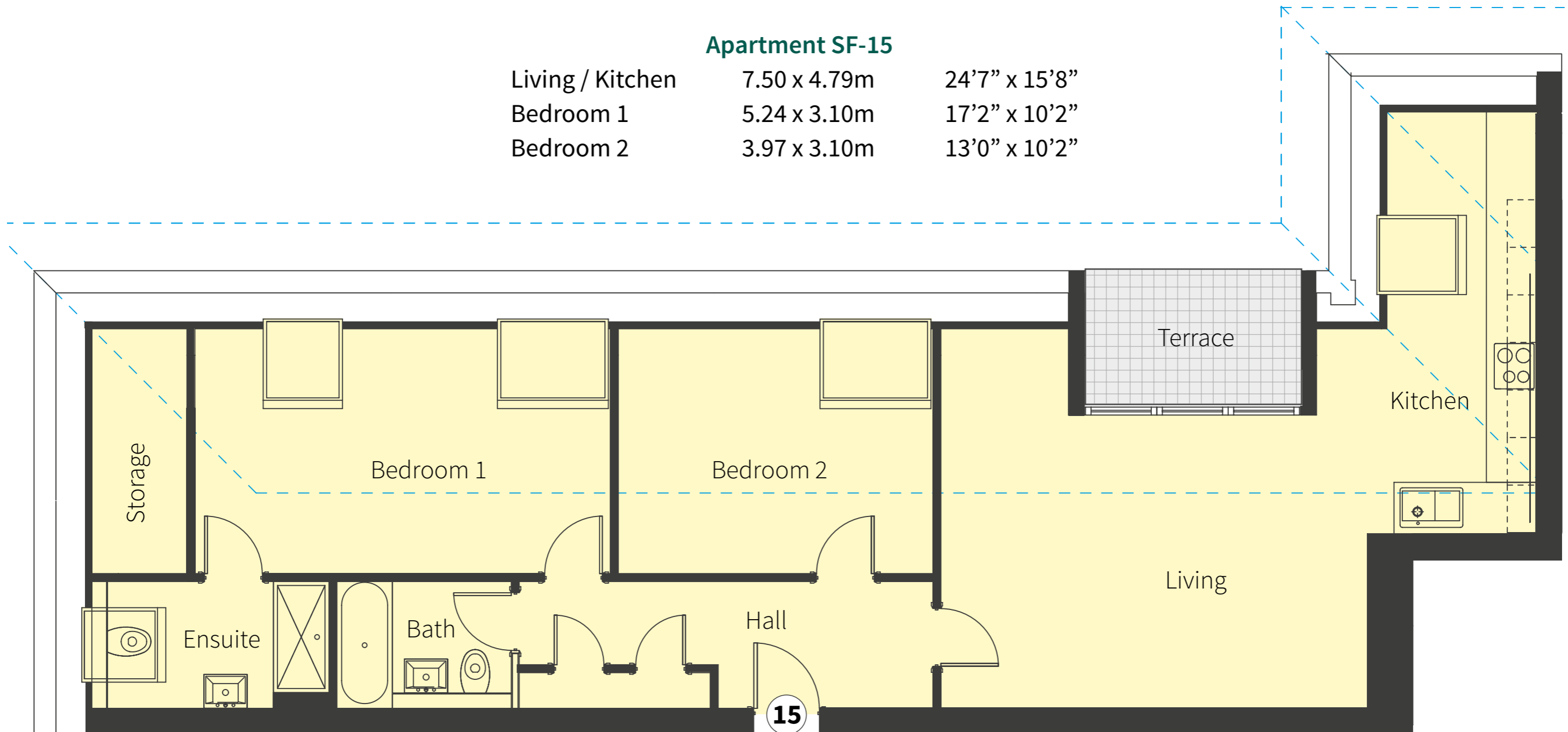
15

16

17

Apartment SF-15

Living / Kitchen	7.50 x 4.79m	24'7" x 15'8"
Bedroom 1	5.24 x 3.10m	17'2" x 10'2"
Bedroom 2	3.97 x 3.10m	13'0" x 10'2"



15

Plans not to scale and are for indicative purposes only.

A development by



www.arilianhomes.co.uk



Sole Agents



01707 655 566
pottersbar@bairstowevescountrywide.co.uk

Floor Plans

01

02

03

04

05

06

07

08

09

10

11

12

14

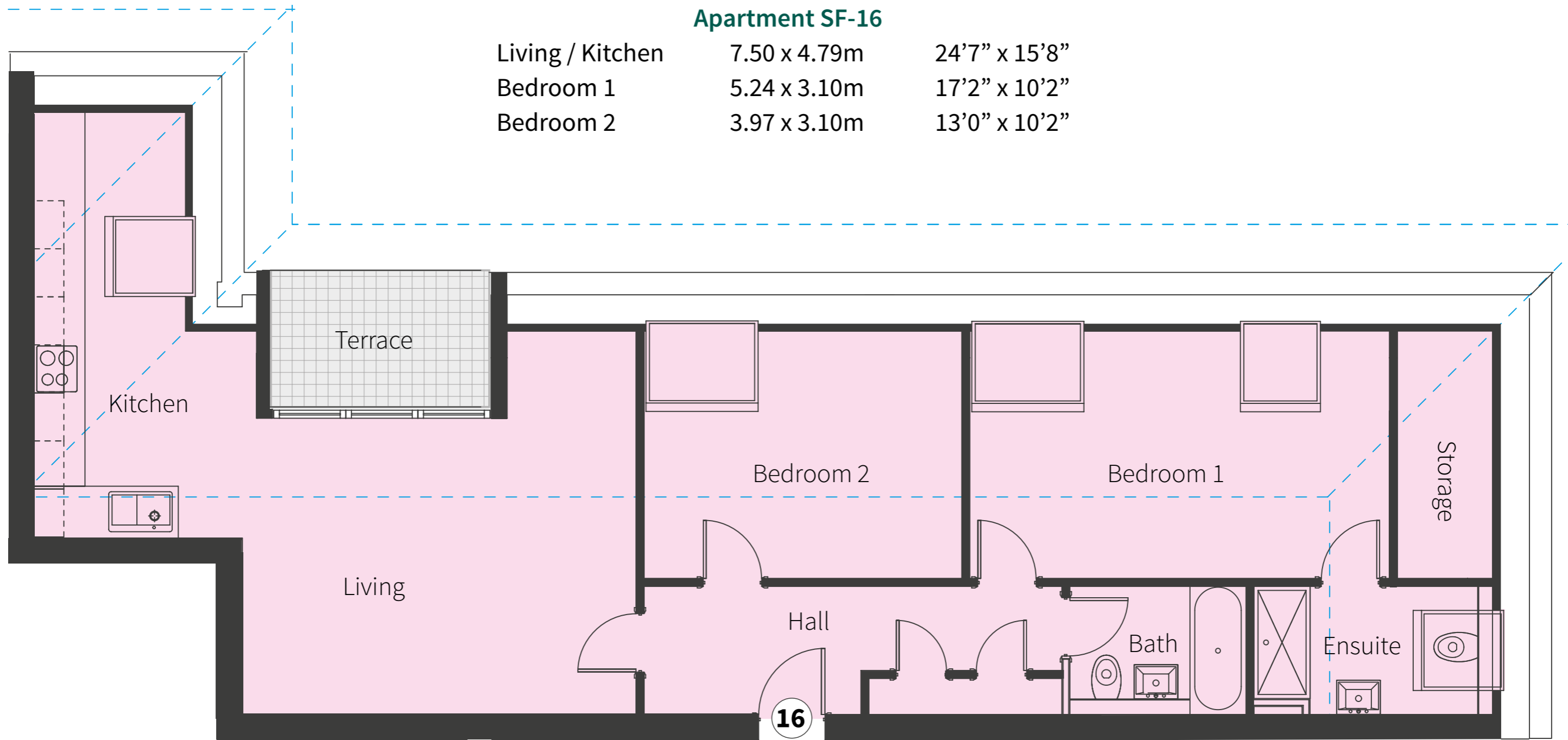
15

16

17

Apartment SF-16

Living / Kitchen	7.50 x 4.79m	24'7" x 15'8"
Bedroom 1	5.24 x 3.10m	17'2" x 10'2"
Bedroom 2	3.97 x 3.10m	13'0" x 10'2"



16

Plans not to scale and are for indicative purposes only.

A development by



www.arilianhomes.co.uk



Sole Agents



01707 655 566
pottersbar@bairstowevescountrywide.co.uk

Floor Plans

01

02

03

04

05

06

07

08

09

10

11

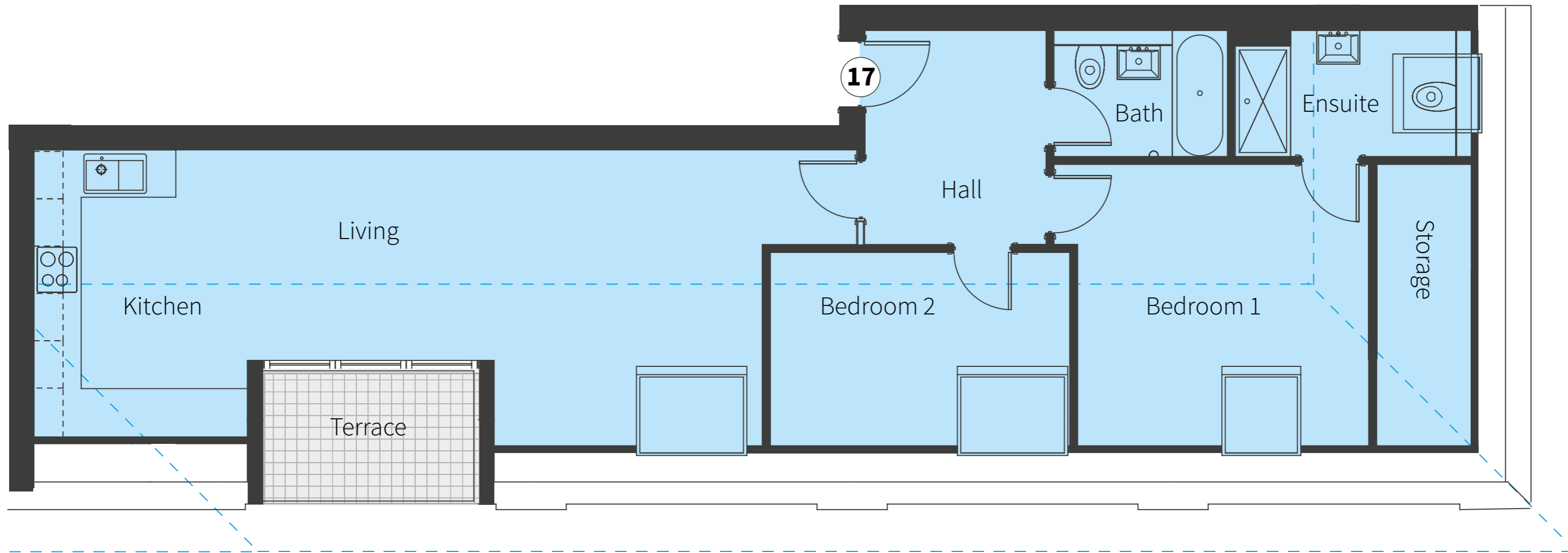
12

14

15

16

17



Apartment SF-17

Living / Kitchen	9.23 x 3.70m	30'3" x 12'2"
Bedroom 1	3.85 x 3.56m	12'7" x 11'8"
Bedroom 2	3.80 x 2.45m	12'6" x 8'2"

17

Plans not to scale and are for indicative purposes only.